

**Kangaroo Golf**

*America's most trusted motorcaddies  
for walking golfers*

# ANNUAL REPLACEMENT OF MOTOR DRIVE O-RING

---

OWNER INSTRUCTIONS

KANGAROO GOLF  
111 KANGAROO, COLUMBUS, NC 28722

KANGAROOGOLF.COM



Remote steering is accomplished by the movement of a specially designed **neoprene O-ring** against the front wheel fender channel. It is important that the O-ring grip the channel *firmly*. Off the shelf O-rings from hardware stores are incompatible.

Normal use will eventually cause the O-ring to wear or deteriorate. The most obvious indication of O-ring deterioration is sluggish or unresponsive steering. **Kangaroo recommends this part be replaced annually.**

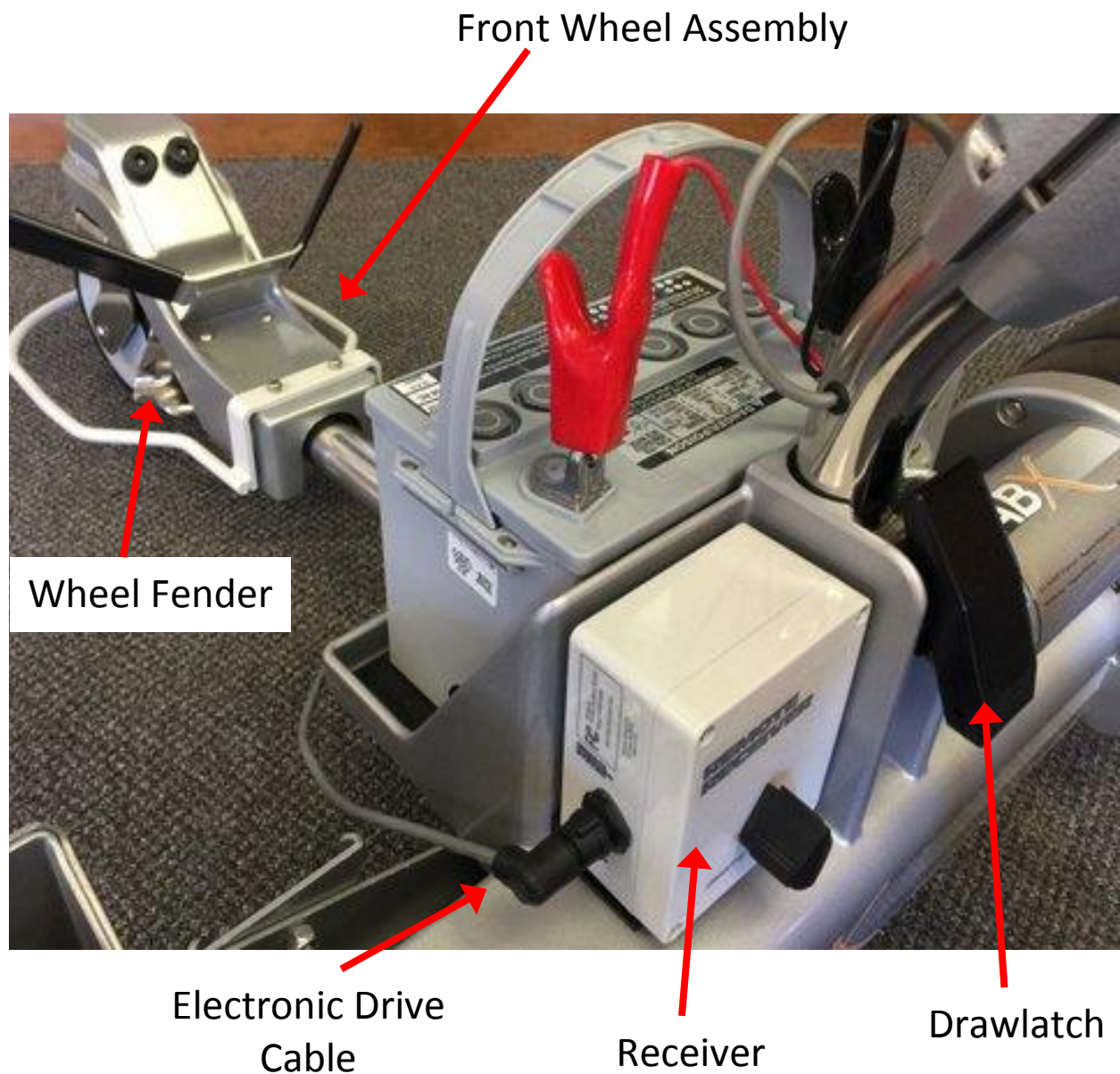
One replacement O-Ring is included with your new Kangaroo. Additional O-ring replacements can be ordered by visiting [www.kangarogolf.com/orderparts.html](http://www.kangarogolf.com/orderparts.html) or phoning Kangaroo Golf at 800-438-3011 (8 am-5 pm Eastern Time).

The O-ring is a “wear item” and is not covered by the Kangaroo factory warranty.

**Replacement O-rings can also be installed by authorized Kangaroo Repair Centers (Find list of repair centers at [www.kangarogolf.com/repaircenters.html](http://www.kangarogolf.com/repaircenters.html)).**

## Tools needed

- Flat work surface
- 5/32" Allen wrench (included with your new motorcaddie)
- New O-ring (Kangaroo part number 600-870 – one free included with your new motorcaddie),
- 9/16" wrench (not provided)



## STEP 1: Disassemble front wheel

### Step 1A: Remove front wheel assembly from the motorcaddie

- ✓ Unplug electronic drive cable from the side of the Receiver by turning the locking ring counterclockwise and gently removing.
- ✓ Remove electronic front drive from the chassis by releasing the drawlatch underneath the chassis.
- ✓ Turn the assembly upside down on the work surface.



### Step 1B: Remove wheel

- ✓ Using the 5/32" Allen wrench, remove the screw and washer from each side of the wheel.
- ✓ Set wheel and hardware aside.



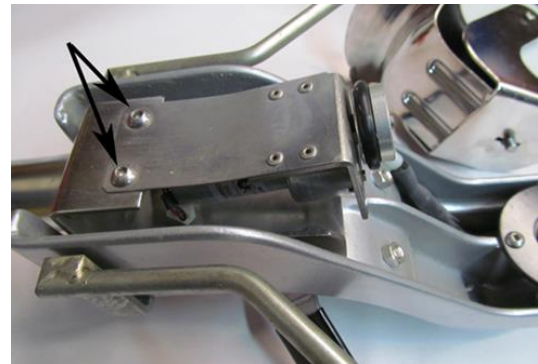
### Step 1C: Remove wheel fender

- ✓ Using 9/16" wrench completely remove the bolt and two washers that hold the wheel fender.
- ✓ Set fender and hardware aside.



### Step 1D: Loosen motor attachment

- ✓ Loosen (but do not remove) two screws holding the motor using the 5/32" Allen wrench.



## STEP 2: Remove and replace O-ring on motor pulley

- ✓ Remove O-ring by pushing it out of the channel using your thumbs. If the O-ring has broken, it may be missing.
- ✓ Install new O-ring. The new O-ring will be a very tight fit. Do not lubricate.

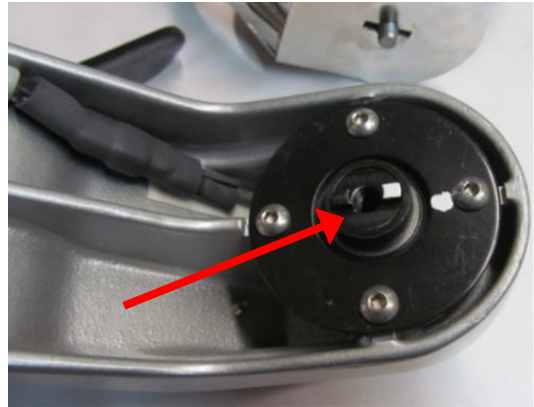




## STEP 3: Reassemble Front Wheel

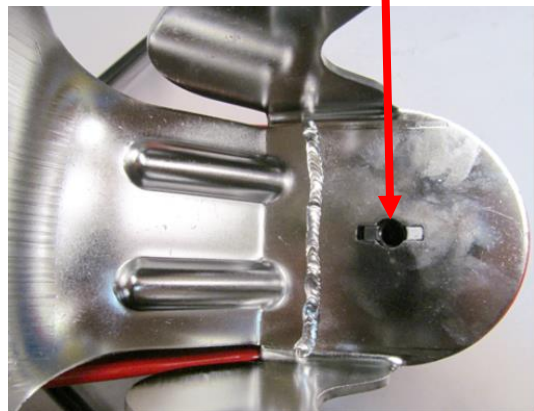
### Step: 3A: Align bearing shaft

- ✓ Move the bearing shaft so that the two white marks are in a line pointing toward the front.



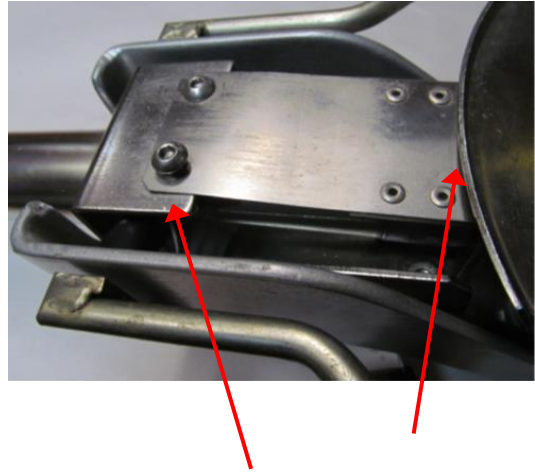
### Step 3B: Reattach wheel fender

- ✓ Place the wheel fender, aligning the bolt hole in the fender with the keyway and keeping the white mark to the front.
- ✓ Insert the large solid washer, star washer and 9-16" bolt. Place the star washer closest to the bolt head.
- ✓ Tighten snugly, while holding fender firmly against the motor. **DO NOT OVERTIGHTEN.** Improper assembly will result in the wheel not responding to left or right commands.



### Step 3C: Tighten motor attachment

- ✓ Retighten the motor, pushing the motor assembly tight against the wheel fender and keeping it centered. This will assure the O-ring will be solidly on the fender channel for proper turning.



### Step 3D: Replace wheel

- ✓ Be sure to place the star washer on the outside of the fender NOT on the wheel side.
- ✓ Tighten with Allen wrench



### Step 3E: Reinstall front wheel assembly on motorcaddie

- ✓ Reinsert into chassis and snap the drawlatch in place.



- ✓ Carefully reinsert electronic drive cable into the Receiver.



---

## Notes