

Kangaroo Golf

*America's most trusted motorcaddies
for walking golfers*

ANNUAL REPLACEMENT OF REMOTE STEERING O-RING

OWNER INSTRUCTIONS

KANGAROO GOLF
111 KANGAROO DRIVE, COLUMBUS, NC 28722

KANGAROOGOLF.COM



Remote steering is accomplished by the movement of a specially designed **neoprene O-ring** against curved steering fork channel. It is important that the O-ring grip the steering fork *firmly*. Off the shelf O-rings from hardware stores are incompatible.

Normal use will eventually cause the O-ring to wear or deteriorate. The most obvious indication of O-ring deterioration is sluggish or unresponsive steering. **Kangaroo recommends this part be replaced annually.**

One replacement O-Ring is included with your new Kangaroo. Additional O-ring replacements can be ordered by visiting www.kangarogolf.com/customer-care/order-parts.html or phoning Kangaroo Golf at 828-436-2101 (8 am-5 pm Eastern Time).

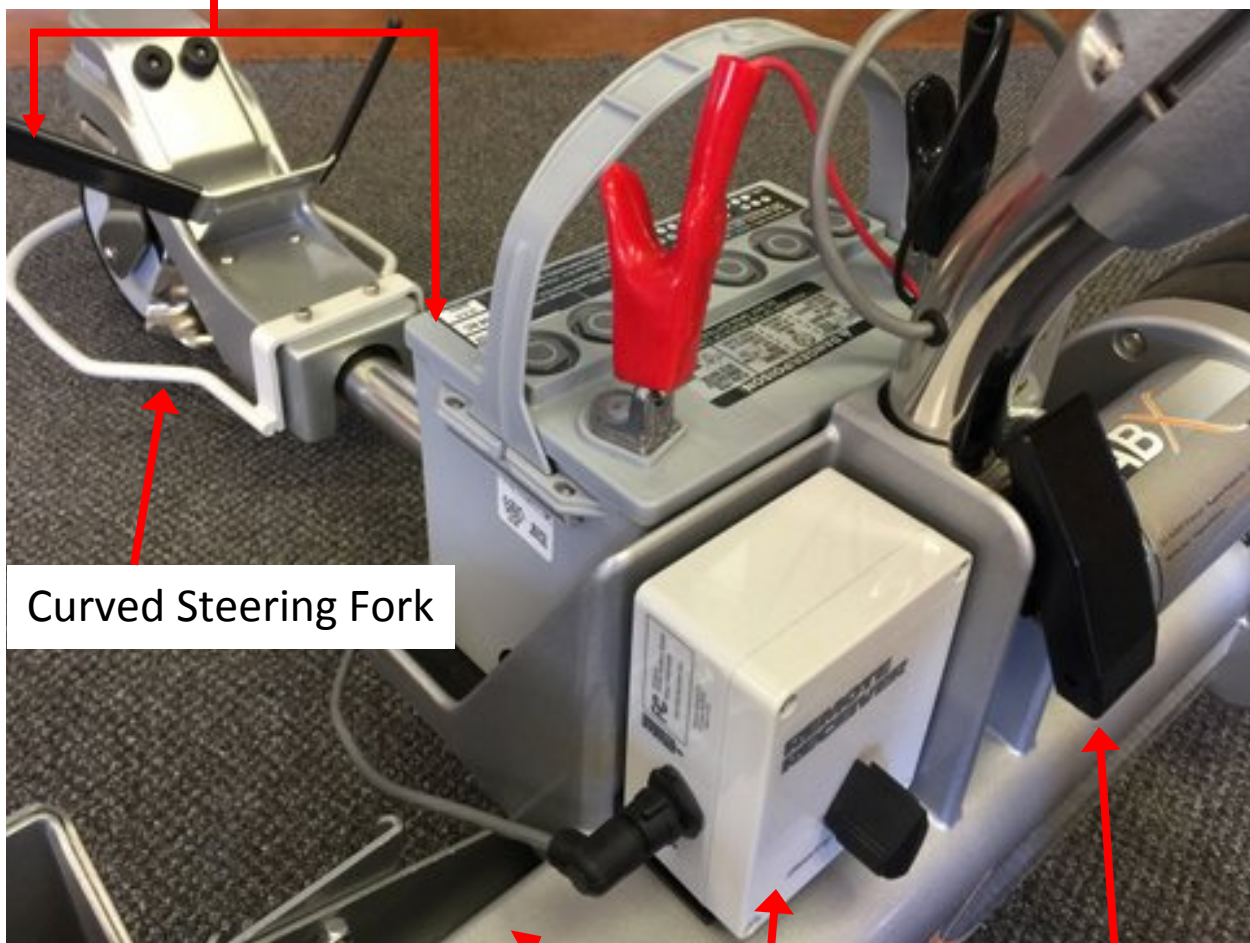
The O-ring is a “wear item” and is not covered by the Kangaroo factory warranty.

Replacement O-rings can also be installed by authorized Kangaroo Repair Centers (Find list of repair centers at www.kangarogolf.com/customer-care/repair-centers.html).

Tools needed

- Flat work surface
- 5/32" Allen wrench (included with your new motorcaddie)
- New O-ring (Kangaroo part number 600-870 – one free included with your new motorcaddie),
- 9/16" wrench (not provided)

Front Wheel Assembly



Curved Steering Fork

Electronic Drive
Cable

Receiver

Drawlatch

STEP 1: Disassemble front wheel

Step 1A: Remove front wheel assembly from motorcaddie

- ✓ Unplug electronic drive cable from the side of Receiver by turning the locking ring counterclockwise and gently removing.
- ✓ Remove electronic front drive from chassis by releasing the drawlatch underneath the chassis.
- ✓ Turn assembly upside down on work surface. You can put it back into chassis to keep it from moving.



Step 1B: Remove wheel

- ✓ Using 5/32" Allen wrench, remove the screw and washer from each side of the wheel. While removing first screw it may help to hold the other screw steady with another screwdriver or allen wrench.



- ✓ Set wheel and hardware aside.

Step 1C: Remove curved steering fork

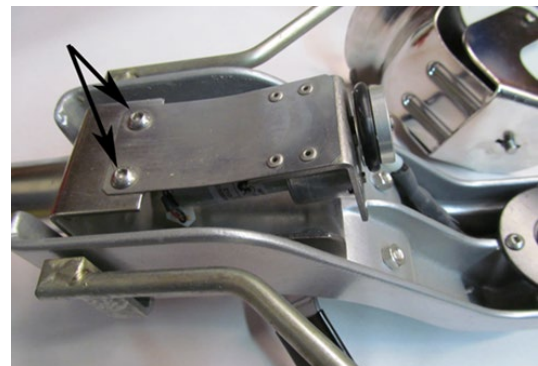
- ✓ Using 9/16" wrench completely remove the bolt and two washers that hold curved steering fork while pushing it back firmly against steering motor.



- ✓ Set curved steering fork and hardware aside.

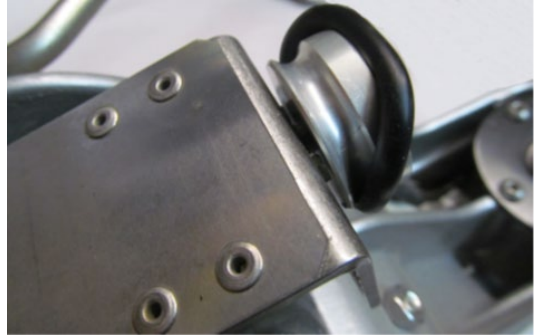
Step 1D: Loosen motor attachment

- ✓ Loosen (but do not remove) two screws holding steering motor using 5/32" Allen wrench.



STEP 2: Remove and replace O-ring on motor pulley

- ✓ Remove O-ring by pushing it out of the channel using your thumbs. If O-ring has broken, it may be missing.



- ✓ Install new O-ring. The new O-ring will be a very tight fit. Do not lubricate.

STEP 3: Reassemble Front Wheel

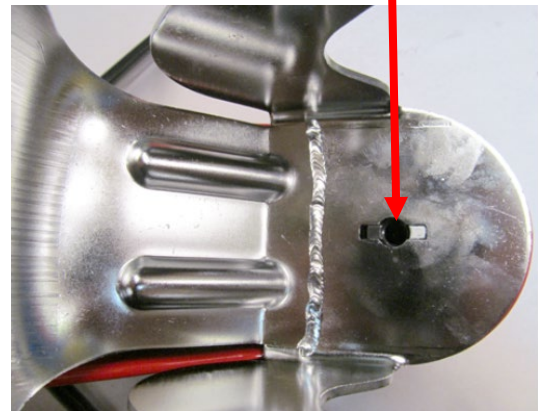
Step: 3A: Align bearing shaft

- ✓ Move bearing shaft so that the two white marks are in a line pointing toward the front. If these are misaligned the front wheel will be misaligned.



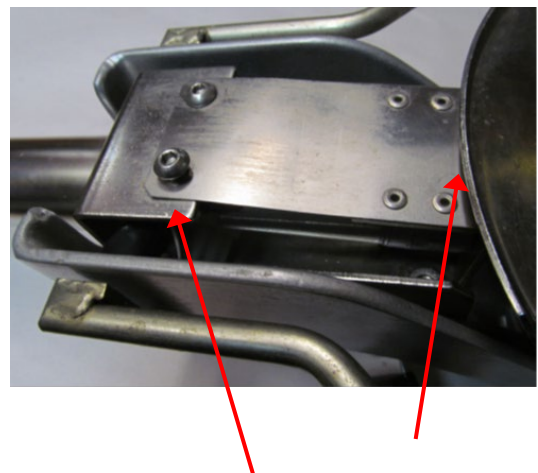
Step 3B: Reattach curved steering fork

- ✓ Place curved steering fork, aligning bolt hole with the keyway and keeping white mark to the front.
- ✓ Insert large solid washer then star washer and 9-16" bolt.
- ✓ Tighten snugly, while holding curved steering fork firmly against steering motor. DO NOT OVERTIGHTEN. Improper assembly will result in wheel not responding to left or right commands.



Step 3C: Retighten steering motor attachment

- ✓ Retighten steering motor, pushing motor assembly tight against curved steering fork and keeping it centered. This will assure O-ring will be solidly on curved steering fork channel for proper turning.



Step 3D: Replace wheel

- ✓ Be sure to place star washer on outside of curved steering fork NOT on the wheel side.
- ✓ Tighten with Allen wrench



Step 3E: Reinstall front wheel assembly on motorcaddie

- ✓ Reinsert into chassis and snap drawlatch in place.
- ✓ Carefully reinsert electronic drive cable into the Receiver.



Notes